



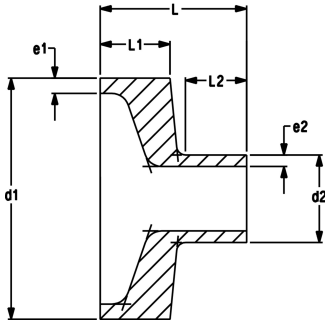
**SYGEF Plus flush style reducer**  
**SDR21/PN16**  
**High Purity clean-room product ISO Class 5 (100)**

**Model:**

- Material: PVDF-HP
- Version: Machined, longer spigots possible on request
- Both spigots long enough for clamping on all possible IR-welding machines

**Note:**

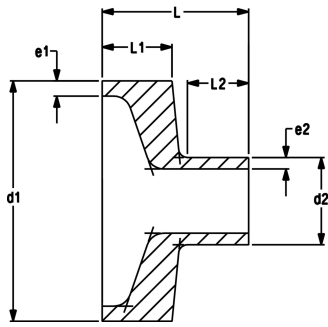
Further dimensions on request  
 d1=110: not IR-315 A compatible, please request longer spigots  
 d40-20 to d110-90 also weldable on IR110  
 \*Clamping on IR machine for welding both spigots, need to be done on d1



d1 (mm)	d2 (mm)	PN (bar)	Code	Weight (kg)
25	20	16	735 903 197	0.012
32	20	16	735 903 198	0.018
32	25	16	735 903 199	0.018
40	20	16	735 903 200	0.025
40	25	16	735 903 201	0.025
40	32	16	735 903 202	0.303
50	20	16	735 903 203	0.041
50	25	16	735 903 204	0.041
50	32	16	735 903 205	0.043
50	40	16	735 903 206	0.041
63	20	16	735 903 207	0.076
63	25	16	735 903 208	0.076
63	32	16	735 903 209	0.770
63	40	16	735 903 210	0.073
63	50	16	735 903 211	0.072
75	20	16	735 903 212	0.130
75	25	16	735 903 213	0.120
75	32	16	735 903 214	0.122
75	40	16	735 903 215	0.113
75	50	16	735 903 216	0.110
75	63	16	735 903 217	0.099
90	20	16	735 903 218	0.195
90	25	16	735 903 219	0.192
90	32	16	735 903 220	0.191
90	40	16	735 903 221	0.185
90	50	16	735 903 222	0.177
90	63	16	735 903 223	0.165
90	75	16	735 903 224	0.134
110	20	16	735 903 225	0.302
110	25	16	735 903 226	0.300
110	32	16	735 903 227	0.300
110	40	16	735 903 228	0.276
110	50	16	735 903 229	0.278
110	63	16	735 903 230	0.261
110	75	16	735 903 231	0.268
110	90	16	735 903 232	0.241
140	20	16	735 903 233	0.635
140	25	16	735 903 234	0.635
140	32	16	735 903 235	0.631
140	40	16	735 903 236	0.602
140	50	16	735 903 237	0.596
140	63	16	735 903 238	0.573
140	75	16	735 903 239	0.568
140	90	16	735 903 240	0.528
140	110	16	735 903 241	0.495
160	20	16	735 903 242	0.900

# Data sheet

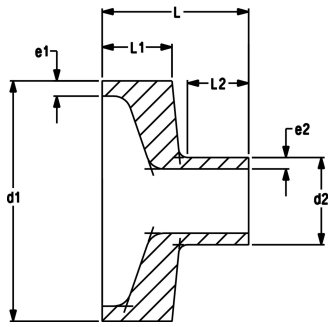
valid from: 1/8/25



d1 (mm)	d2 (mm)	PN (bar)	Code	Weight (kg)
160	25	16	<b>735 903 243</b>	0.895
160	32	16	<b>735 903 244</b>	0.888
160	40	16	<b>735 903 245</b>	0.863
160	50	16	<b>735 903 246</b>	0.847
160	63	16	<b>735 903 247</b>	0.810
160	75	16	<b>735 903 248</b>	0.780
160	90	16	<b>735 903 249</b>	0.750
160	110	16	<b>735 903 250</b>	0.700
160	140	16	<b>735 903 251</b>	0.650
200	20	16	<b>735 903 252</b>	1.546
200	25	16	<b>735 903 253</b>	1.542
200	32	16	<b>735 903 254</b>	1.525
200	40	16	<b>735 903 255</b>	1.520
200	50	16	<b>735 903 256</b>	1.500
200	63	16	<b>735 903 257</b>	1.451
200	75	16	<b>735 903 258</b>	1.430
200	90	16	<b>735 903 259</b>	1.560
200	110	16	<b>735 903 260</b>	1.420
200	140	16	<b>735 903 261</b>	1.100
200	160	16	<b>735 903 262</b>	1.070
225	20	16	<b>735 903 263</b>	2.120
225	25	16	<b>735 903 264</b>	2.120
225	32	16	<b>735 903 265</b>	2.120
225	40	16	<b>735 903 266</b>	2.100
225	50	16	<b>735 903 267</b>	2.090
225	63	16	<b>735 903 268</b>	2.060
225	75	16	<b>735 903 269</b>	2.020
225	90	16	<b>735 903 270</b>	1.980
225	110	16	<b>735 903 271</b>	1.890
225	140	16	<b>735 903 272</b>	1.670
225	160	16	<b>735 903 273</b>	1.620
225	200	16	<b>735 903 274</b>	1.272
250	63	16	<b>735 903 280</b>	2.720
250	75	16	<b>735 903 281</b>	2.690
250	90	16	<b>735 903 282</b>	2.640
250	110	16	<b>735 903 283</b>	2.550
250	140	16	<b>735 903 284</b>	2.410
250	160	16	<b>735 903 285</b>	2.310
250	200	16	<b>735 903 286</b>	2.020
250	225	16	<b>735 903 287</b>	1.560
280	63	16	<b>735 903 293</b>	3.600
280	75	16	<b>735 903 294</b>	3.550
280	90	16	<b>735 903 295</b>	3.500
280	110	16	<b>735 903 296</b>	3.430
280	140	16	<b>735 903 297</b>	3.150
280	160	16	<b>735 903 298</b>	3.050
280	200	16	<b>735 903 299</b>	2.580
280	225	16	<b>735 903 300</b>	2.420
280	250	16	<b>735 903 301</b>	2.520
315	63	16	<b>735 903 307</b>	5.160
315	75	16	<b>735 903 308</b>	5.120
315	90	16	<b>735 903 309</b>	2.060
315	110	16	<b>735 903 310</b>	4.960
315	140	16	<b>735 903 311</b>	4.750
315	160	16	<b>735 903 312</b>	4.610

# Data sheet

valid from: 1/8/25

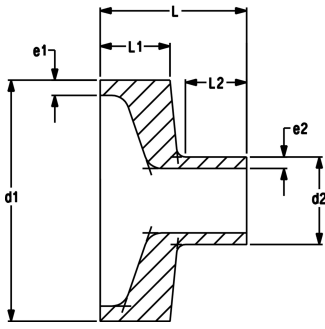


d1 (mm)	d2 (mm)	PN (bar)	Code	Weight (kg)
315	200	16	735 903 313	4.340
315	225	16	735 903 314	4.150
315	250	16	735 903 315	3.840
315	280	16	735 903 316	3.600

d1 (mm)	d2 (mm)	e1 (mm)	e2 (mm)	L (mm)	L1 (mm)	L2 (mm)	d1 FM	d2 FM
25	20	1.9	1.9	42	20.0	20.0	IR-63 / IR-110	IR-63 / IR-110
32	20	2.4	1.9	43	20.0	20.0	IR-63 / IR-110	IR-63 / IR-110
32	25	2.4	1.9	43	20.0	20.0	IR-63 / IR-110	IR-63 / IR-110
40	20	2.4	1.9	44	21.0	20.0	IR-63 / IR-110	IR-63 / IR-110
40	25	2.4	1.9	44	21.0	20.0	IR-63 / IR-110	IR-63 / IR-110
40	32	2.4	2.4	45	21.0	20.0	IR-63 / IR-110	IR-63 / IR-110
50	20	3.0	1.9	44	21.0	20.0	IR-63 / IR-110	IR-63 / IR-110
50	25	3.0	1.9	44	21.0	20.0	IR-63 / IR-110	IR-63 / IR-110
50	32	3.0	2.4	45	21.0	20.0	IR-63 / IR-110	IR-63 / IR-110
50	40	3.0	2.4	46	21.0	21.0	IR-63 / IR-110	IR-63 / IR-110
63	20	3.0	1.9	48	25.0	20.0	IR-63 / IR-110 / IR-225	IR-63 / IR-110
63	25	3.0	1.9	48	25.0	20.0	IR-63 / IR-110 / IR-225	IR-63 / IR-110
63	32	3.0	2.4	49	25.0	20.0	IR-63 / IR-110 / IR-225	IR-63 / IR-110
63	40	3.0	2.4	50	25.0	21.0	IR-63 / IR-110 / IR-225	IR-63 / IR-110
63	50	3.0	3	51	25.0	21.0	IR-63 / IR-110 / IR-225	IR-63 / IR-110
75	20	3.6	1.9	58	26.0	20.0	IR-110 / IR-225	IR-63 / IR-110
75	25	3.6	1.9	58	26.0	20.0	IR-110 / IR-225	IR-63 / IR-110
75	32	3.6	2.4	58	26.0	20.0	IR-110 / IR-225	IR-63 / IR-110
75	40	3.6	2.4	58	26.0	21.0	IR-110 / IR-225	IR-63 / IR-110
75	50	3.6	3	59	26.0	21.0	IR-110 / IR-225	IR-63 / IR-110
75	63	3.6	3	59	26.0	25.0	IR-110 / IR-225	IR-63 / IR-110 / IR-225
90	20	4.3	1.9	62	30.0	20.0	IR-110 / IR-225	IR-63 / IR-110
90	25	4.3	1.9	62	30.0	20.0	IR-110 / IR-225	IR-63 / IR-110
90	32	4.3	2.4	63	30.0	20.0	IR-110 / IR-225	IR-63 / IR-110
90	40	4.3	2.4	63	30.0	21.0	IR-110 / IR-225	IR-63 / IR-110
90	50	4.3	3	64	30.0	21.0	IR-110 / IR-225	IR-63 / IR-110
90	63	4.3	3	64	30.0	25.0	IR-110 / IR-225	IR-63 / IR-110 / IR-225
90	75	4.3	3.6	55	26.0	26.0	IR-110 / IR-225	IR-110 / IR-225
110	20	5.3	1.9	64	30.0	20.0	IR-110 / IR-225 / IR-315	IR-63 / IR-110
110	25	5.3	1.9	64	30.0	20.0	IR-110 / IR-225 / IR-315	IR-63 / IR-110
110	32	5.3	2.4	65	30.0	20.0	IR-110 / IR-225 / IR-315	IR-63 / IR-110
110	40	5.3	2.4	65	30.0	21.0	IR-110 / IR-225 / IR-315	IR-63 / IR-110
110	50	5.3	3	66	30.0	21.0	IR-110 / IR-225 / IR-315	IR-63 / IR-110
110	63	5.3	3	66	30.0	25.0	IR-110 / IR-225 / IR-315	IR-63 / IR-110 / IR-225
110	75	5.3	3.6	66	30.0	26.0	IR-110 / IR-225 / IR-315	IR-110 / IR-225
110	90	5.3	4.3	66	30.0	26.0	IR-110 / IR-225 / IR-315	IR-110 / IR-225
140	20	6.7	1.9	74	40.0	20.0	IR-225 / IR-315	IR-63 / IR-110
140	25	6.7	1.9	74	40.0	20.0	IR-225 / IR-315	IR-63 / IR-110
140	32	6.7	2.4	75	40.0	20.0	IR-225 / IR-315	IR-63 / IR-110
140	40	6.7	2.4	75	40.0	21.0	IR-225 / IR-315	IR-63 / IR-110
140	50	6.7	3	76	40.0	21.0	IR-225 / IR-315	IR-63 / IR-110
140	63	6.7	3	76	40.0	25.0	IR-225 / IR-315	IR-63 / IR-110 / IR-225
140	75	6.7	3.6	78	40.0	26.0	IR-225 / IR-315	IR-110 / IR-225
140	90	6.7	4.3	76	38.0	26.0	IR-225 / IR-315	IR-110 / IR-225
140	110	6.7	5.3	78	38.0	28.5	IR-225 / IR-315	IR-110 / IR-225 / IR-315
160	20	7.7	1.9	80	40.0	20.0	IR-225 / IR-315	IR-110
160	25	7.7	1.9	80	40.0	20.0	IR-225 / IR-315	IR-110
160	32	7.7	2.4	80	40.0	20.0	IR-225 / IR-315	IR-110
160	40	7.7	2.4	80	40.0	21.0	IR-225 / IR-315	IR-110
160	50	7.7	3	80	40.0	21.0	IR-225 / IR-315	IR-110
160	63	7.7	3	80	40.0	25.0	IR-225 / IR-315	IR110 / IR-225
160	75	7.7	3.6	80	40.0	26.0	IR-225 / IR-315	IR110 / IR-225

# Data sheet

valid from: 1/8/25



d1 (mm)	d2 (mm)	e1 (mm)	e2 (mm)	L (mm)	L1 (mm)	L2 (mm)	d1 FM	d2 FM
160	90	7.7	4.3	80	40.0	26.0	IR-225 / IR-315	IR110 / IR-225
160	110	7.7	5.3	80	40.0	28.5	IR-225 / IR-315	IR-110 / IR-225 / IR-315
160	140	7.7	6.7	88	40.0	37.5	IR-225 / IR-315	IR-225 / IR-315
200	20	9.6	1.9	87	45.0	20.0	IR-225 / IR-315	IR-110
200	25	9.6	1.9	87	45.0	20.0	IR-225 / IR-315	IR-110
200	32	9.6	2.4	87	45.0	20.0	IR-225 / IR-315	IR-110
200	40	9.6	2.4	87	45.0	21.0	IR-225 / IR-315	IR-110
200	50	9.6	3	87	42.0	21.0	IR-225 / IR-315	IR-110
200	63	9.6	3	87	45.0	25.0	IR-225 / IR-315	IR-110 / IR-225
200	75	9.6	3.6	88	45.0	26.0	IR-225 / IR-315	IR-110 / IR-225
200	90	9.6	4.3	91	50.0	26.0	IR-225 / IR-315	IR-110 / IR-225
200	110	9.6	5.3	89	49.0	28.5	IR-225 / IR-315	IR-225 / IR-315
200	140	9.6	6.7	59	40.0	37.5	IR-225 / IR-315	IR-225 / IR-315
200	160	9.6	7.7	88	40.0	37.5	IR-225 / IR-315	IR-225 / IR-315
225	20	10.8	1.9	92	50.0	20.0	IR-225 / IR-315	IR-110
225	25	10.8	1.9	92	50.0	20.0	IR-225 / IR-315	IR-110
225	32	10.8	2.4	92	50.0	20.0	IR-225 / IR-315	IR-110
225	40	10.8	2.4	93	50.0	21.0	IR-225 / IR-315	IR-110
225	50	10.8	3	93	50.0	21.0	IR-225 / IR-315	IR-110
225	63	10.8	3	93	50.0	25.0	IR-225 / IR-315	IR-110 / IR-225
225	75	10.8	3.6	94	50.0	26.0	IR-225 / IR-315	IR-110 / IR-225
225	90	10.8	4.3	94	50.0	26.0	IR-225 / IR-315	IR-110 / IR-225
225	110	10.8	5.3	94	50.0	28.5	IR-225 / IR-315	IR-225 / IR-315
225	140	10.8	6.7	96	48.0	37.5	IR-225 / IR-315	IR-225 / IR-315
225	160	10.8	7.7	96	48.0	37.5	IR-225 / IR-315	IR-225 / IR-315
225	200	10.8	9.6	87	40.0	38.5	IR-225 / IR-315	IR-225 / IR-315
250	63	11.9	3	96	54.0	25.0	IR-315	IR-225
250	75	11.9	3.6	98	54.0	26.0	IR-315	IR-225
250	90	11.9	4.3	98	54.0	26.0	IR-315	IR-225
250	110	11.9	5.3	98	54.0	28.5	IR-315	IR-225 / IR-315
250	140	11.9	6.7	100	54.0	37.5	IR-315	IR-225 / IR-315
250	160	11.9	7.7	100	54.0	37.5	IR-315	IR-225 / IR-315
250	200	11.9	9.6	99	50.0	38.5	IR-315	IR-225 / IR-315
250	225	11.9	10.8	88	40.0	38.5	IR-315	IR-225 / IR-315
280	63	13.4	3	99	56.0	25.0	IR-315	IR-225
280	75	13.4	3.6	100	56.0	26.0	IR-315	IR-225
280	90	13.4	4.3	100	56.0	26.0	IR-315	IR-225
280	110	13.4	5.3	106	56.0	28.5	IR-315	IR-225 / IR-315
280	140	13.4	6.7	102	56.0	37.5	IR-315	IR-225 / IR-315
280	160	13.4	7.7	102	56.0	37.5	IR-315	IR-225 / IR-315
280	200	13.4	9.6	99	50.0	38.5	IR-315	IR-225 / IR-315
280	225	13.4	10.8	99	50.0	38.5	IR-315	IR-225 / IR-315
280	250	13.4	11.9	110	50.0	49.5	IR-315	IR-315
315	63	15.0	3	113	60.0	25.0	IR-315	IR-225
315	75	15.0	3.6	114	60.0	26.0	IR-315	IR-225
315	90	15.0	4.3	114	60.0	26.0	IR-315	IR-225
315	110	15.0	5.3	115	60.0	26.0	IR-315	IR-225 / IR-315
315	140	15.0	6.7	116	60.0	37.5	IR-315	IR-225 / IR-315
315	160	15.0	7.7	116	60.0	37.5	IR-315	IR-225 / IR-315
315	200	15.0	9.6	117	60.0	38.5	IR-315	IR-225 / IR-315
315	225	15.0	10.8	117	60.0	38.5	IR-315	IR-225 / IR-315
315	250	15.0	11.9	120	60.0	49.5	IR-315	IR-315
315	280	15.0	13.4	120	60.0	49.5	IR-315	IR-315

# Data sheet

valid from: 1/8/25

---



The technical data are not binding. They neither constitute expressly warranted characteristics nor guaranteed properties nor a guaranteed durability. They are subject to modification. Our General Terms of Sale apply.

Georg Fischer Piping Systems Ltd, Postfach, CH-8201 Schaffhausen/Switzerland Phone +41 -(0)52-631 1111 e-mail:  
info.ps@georgfischer.com Internet: <http://www.gfps.com>