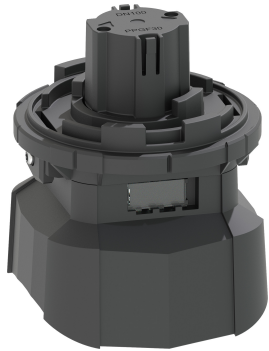


**手动球阀中间连接模块**  
**适配 球阀546 Pro 及 三通球阀543 Pro**

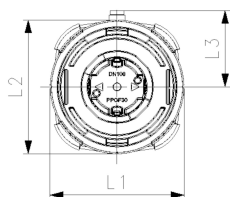
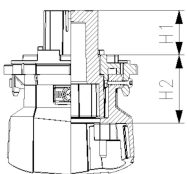
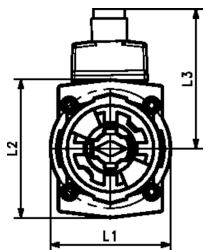
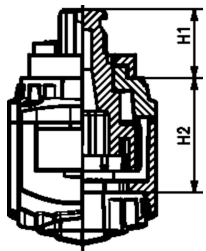
**型号:**

- 适用于手动球阀546 Pro,和手动三通球阀543 Pro
- 通过限位开关DCI可实现阀门开关信号反馈，带LED灯 (PNP, NPN and NAMUR)
- 含透明标签盖子

球阀543 Pro需要额外垫圈 (DN10-15: 198543000, DN20-25: 198543001, DN32-40: 198543002, DN50: 198543003)



DN (mm)	d (mm)	手动球阀安装件 code	SP	weight (kg)	H1 (mm)	H2 (mm)	L1 (mm)	L2 (mm)	L3 (mm)
10 - 15	16 - 20	<b>198 546 102</b>	1	0,042	15	32	37	44	46
20 - 25	25 - 32	<b>198 546 103</b>	1	0,052	20	32	41	47	48
32 - 40	40 - 50	<b>198 546 105</b>	1	0,097	23	33	53	60	54
	50	<b>198 546 107</b>	1	0,111	26	36	56	62	55
65 - 80	75 - 90	<b>198 546 108</b>	1	0,111	34	52	103	103	58
	100	<b>198 546 109</b>	1	0,111	34	52	103	103	58



# Data sheet

valid from: 2026/3/28



---

The technical data are not binding. They neither constitute expressly warranted characteristics nor guaranteed properties nor a guaranteed durability. They are subject to modification. Our General Terms of Sale apply.

Georg Fischer Piping Systems Ltd, Postfach, CH-8201 Schaffhausen/Switzerland Phone +41 -(0)52-631 1111 e-mail:  
info.ps@georgfischer.com Internet: <http://www.gfps.com>