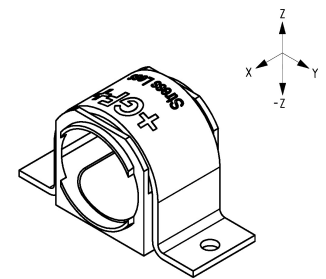
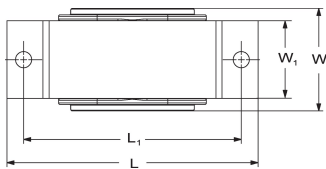
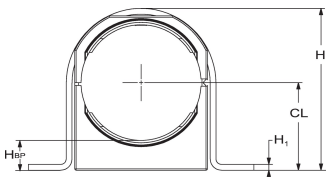
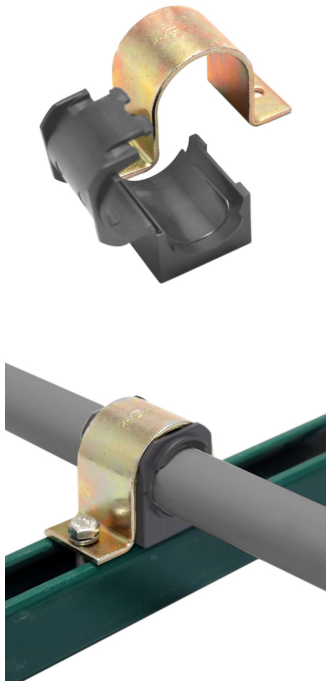


Stress Less Pipe Guide - IPS

First pipe support system especially designed to eliminate stress transfer to pipe due to thermal expansion or seismic events. Has engineered, designed gap of 3mm between guide insert and pipe OD. Excessive force can never be exerted on the pipe regardless of bolt torque.

- Includes steel hoop and plastic guide insert.
- Guide insert is Polypropylene, Grey, UV resistant.
- Note: 5 inch guide insert is Polypropylene, Black, UV resistant.
- Hoop is trivalent gold chromium-coated galvanized steel, compliant with ASTM B633.
- Mounts to any flat surface or standard strut support.
- Mounting holes in hoop for bolts size "SC" (not included).
- Recommend using 70,000psi (482 MPa) tensile strength or greater bolts in recommended sizes.
- F_y , F_z , and $-F_z$ are rated design loads, in lb-f (pounds-force) and N (Newtons), for respective y, z, and -z directions.



Size (inch)	Code
1/2	155 484 520
3/4	155 484 521
1	155 484 522
1 1/4	155 484 523
1 1/2	155 484 524
2	155 484 525
2 1/2	155 484 526
3	155 484 527
4	155 484 528
6	155 484 529
8	155 484 530

Size (inch)	H (inch)	CL (inch)	Hbp (inch)	H1 (inch)	L (inch)	L1 (inch)	W (inch)	W1 (inch)	SC	Fz	F-z	Fy
1/2	1.61	0.75	0.33	0.12	3.27	2.60	1.97	1.44	1/4"	150lbs / 660N	180lbs / 800N	150lbs / 660N
3/4	1.85	0.90	0.37	0.12	3.46	2.80	1.97	1.44	1/4"	150lbs / 660N	180lbs / 800N	150lbs / 660N
1	2.20	1.10	0.44	0.12	3.74	3.07	1.97	1.44	1/4"	150lbs / 660N	180lbs / 800N	150lbs / 660N
1 1/4	2.28	1.05	0.22	0.12	4.02	3.39	1.97	1.44	1/4"	150lbs / 660N	180lbs / 800N	150lbs / 660N
1 1/2	2.72	1.30	0.35	0.12	4.37	3.70	1.97	1.44	1/4"	150lbs / 660N	180lbs / 800N	150lbs / 660N
2	3.50	1.82	0.63	0.12	4.88	4.21	1.97	1.44	5/16"	200lbs / 800N	240lbs / 880N	200lbs / 800N
2 1/2	4.25	2.29	0.85	0.12	5.31	4.69	1.97	1.44	5/16"	300lbs / 1300N	360lbs / 1600N	300lbs / 1300N
3	4.45	2.30	0.55	0.12	5.94	5.28	1.97	1.44	5/16"	450lbs / 2000N	540lbs / 2400N	450lbs / 2000N
4	5.35	2.70	0.44	0.12	6.89	6.26	1.97	1.44	5/16"	650lbs / 2800N	780lbs / 3400N	600lbs / 2670N
6	7.60	3.87	0.56	0.19	9.88	8.94	1.97	1.42	3/8"	900lbs / 4000N	1080lbs / 4800N	600lbs / 2670N
8	10.31	5.43	1.12	0.19	12.20	11.26	1.97	1.42	3/8"	1750lbs / 7700N	2100lbs / 9300N	800lbs / 3560N

The technical data are not binding. They neither constitute expressly warranted characteristics nor guaranteed properties nor a guaranteed durability. They are subject to modification. Our General Terms of Sale apply.

Georg Fischer Piping Systems Ltd, Postfach, CH-8201 Schaffhausen/Switzerland Phone +41 -(0)52-631 1111 e-mail: info.ps@georgfischer.com Internet: <http://www.gfps.com>