

## Flanges PP-V (full plastic)

### Model:

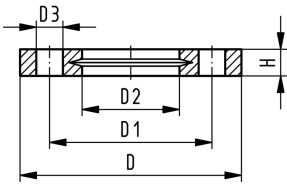
- Full-plastic flange PP-GF (30 % glass-fibre reinforced)
- Metric: ISO 7005, EN 1092, ISO 9624
- ASME: ANSI/ASME B 16.5 class 150, ASTM D2024, BS 1560, BS EN 1759
- Special flange adapter ANSI for d25 - d50 and d90 required

AL: number of holes

d (mm)	DN (mm)	d (inch)	PN (bar)	Bolt / circle	Design	Code	Weight (kg)
20	15		16	PN10	Butt/Socket	<b>727 700 406</b>	0.093
20	15	½	16	class 150	Butt/Socket	<b>727 701 406</b>	0.091
25	20		16	PN10	Butt/Socket	<b>727 700 407</b>	0.120
25	20	¾	16	class 150	Butt/Socket	<b>727 701 407</b>	0.120
32	25		16	PN10	Butt/Socket	<b>727 700 408</b>	0.151
32	25	1	16	class 150	Butt/Socket	<b>727 701 408</b>	0.147
40	32		16	PN10	Butt/Socket	<b>727 700 409</b>	0.244
40	32	1 ¼	16	class 150	Butt/Socket	<b>727 701 409</b>	0.246
50	40		16	PN10	Butt/Socket	<b>727 700 410</b>	0.297
50	40	1 ½	16	class 150	Butt/Socket	<b>727 701 410</b>	0.299
63	50		16	PN10	Butt/Socket	<b>727 700 411</b>	0.362
63	50	2	16	class 150	Butt/Socket	<b>727 701 411</b>	0.361
75	65		16	PN10	Butt/Socket	<b>727 700 412</b>	0.487
75	65	2 ½	16	class 150	Butt/Socket	<b>727 701 412</b>	0.492
90	80		16	PN10	Socket	<b>727 700 413</b>	0.550
90	80		16	PN10	Butt	<b>727 700 513</b>	0.544
90	80	3	16	class 150	Socket	<b>727 701 413</b>	0.605
90	80	3	16	class 150	Butt	<b>727 701 513</b>	0.607
110	100		16	PN10	Socket	<b>727 700 414</b>	0.640
110	100		16	PN10	Butt	<b>727 700 514</b>	0.643
110	100	4	16	class 150	Socket	<b>727 701 414</b>	0.704
110	100	4	16	class 150	Butt	<b>727 701 514</b>	0.736
125	100		16	PN10	Butt	<b>727 700 515</b>	0.635
140	125		16	PN10	Socket	<b>727 700 416</b>	0.781
140	125		16	PN10	Butt	<b>727 700 516</b>	0.842
160	150		16	PN10/ class 150	Socket	<b>727 700 417</b>	1.050
160	150	6	16	PN10/ class 150	Butt	<b>727 700 517</b>	1.200
180	150		16	PN10/ Class 150	Butt	<b>727 700 518</b>	1.200
200	200		16	PN10/ class 150	Socket	<b>727 700 419</b>	1.629
200	200	8	16	PN10/ class 150	Butt	<b>727 700 519</b>	1.400
225	200		16	PN10/ class 150	Socket	<b>727 700 420</b>	1.400
225	200	8	16	PN10/ class 150	Butt	<b>727 700 520</b>	1.400
250	250		10	PN10	Socket	<b>727 700 421</b>	2.229
250	250		10	PN10	Butt	<b>727 700 521</b>	2.052
250	250	10	10	class 150	Butt	<b>727 701 521</b>	2.241
280	250		10	PN10	Socket	<b>727 700 422</b>	1.651
280	250		10	PN10	Butt	<b>727 700 522</b>	1.700
280	250	10	10	class 150	Socket	<b>727 701 422</b>	1.838
280	250	10	10	class 150	Butt	<b>727 701 522</b>	2.173
315	300		10	PN10	Socket	<b>727 700 423</b>	2.461
315	300		10	PN10	Butt	<b>727 700 523</b>	2.400
315	300	12	10	class 150	Socket	<b>727 701 423</b>	3.482
315	300	12	10	class 150	Butt	<b>727 701 523</b>	3.627

# Data sheet

valid from: 4/1/26



d (mm)	DN (mm)	d (inch)	PN (bar)	Bolt / circle	Design	Code	Weight (kg)
355	350		10	PN10	Socket	<b>727 700 424</b>	3.000
355	350		10	PN10	Butt	<b>727 700 524</b>	4.440
400	400		10	PN10	Socket	<b>727 700 425</b>	5.135
400	400		10	PN10	Butt	<b>727 700 525</b>	5.624

d (mm)	D (mm)	D1 (mm)	D2 (mm)	D3 (mm)	Hmax (mm)	AL	M
20	95	65	28	14	16	4	M12
20	95	60	28	16	16	4	M12
25	105	75	34	14	17	4	M12
25	105	70	34	16	17	4	M12
32	115	85	42	14	18	4	M12
32	115	79	42	16	18	4	M12
40	140	100	51	18	20	4	M16
40	140	89	51	16	20	4	M16
50	150	110	62	18	22	4	M16
50	150	98	62	16	22	4	M16
63	165	125	78	18	24	4	M16
63	165	121	78	19	24	4	M16
75	185	145	92	18	26	4	M16
75	185	140	92	19	26	4	M16
90	200	160	110	18	27	8	M16
90	200	160	108	18	27	8	M16
90	200	152	110	19	27	4	M16
90	200	152	108	19	27	4	M16
110	220	180	133	18	28	8	M16
110	220	180	128	18	28	8	M16
110	229	190	133	19	28	8	M16
110	229	190	128	19	28	8	M16
125	220	180	135	18	28	8	M16
140	250	210	167	18	30	8	M16
140	250	210	158	18	30	8	M16
160	285	240	190	22	32	8	M20
160	285	240	178	22	32	8	M20
180	285	240	188	22	32	8	M20
200	340	297	226	22	34	8	M20
200	340	297	235	22	34	8	M20
225	340	295	250	22	34	8	M20
225	340	297	238	22	34	8	M20
250	395	350	277	22	38	12	M20
250	395	350	288	22	38	12	M20
250	406	362	288	26	38	12	M20
280	395	350	310	22	38	12	M20
280	395	350	294	22	38	12	M20
280	406	362	310	26	38	12	M20
280	406	362	294	26	38	12	M20
315	445	400	348	22	42	12	M20
315	445	400	338	22	42	12	M20
315	483	432	348	26	42	12	M20
315	483	432	338	26	42	12	M20
355	515	460	388	22	46	16	M20
355	515	460	376	22	46	16	M20
400	574	515	442	26	50	16	M24
400	574	515	430	26	50	16	M24

# Data sheet



valid from: 4/1/26

---

The technical data are not binding. They neither constitute expressly warranted characteristics nor guaranteed properties nor a guaranteed durability. They are subject to modification. Our General Terms of Sale apply.

Georg Fischer Piping Systems Ltd, Postfach, CH-8201 Schaffhausen/Switzerland Phone +41 -(0)52-631 1111 e-mail:  
info.ps@georgfischer.com Internet: <http://www.gfps.com>