

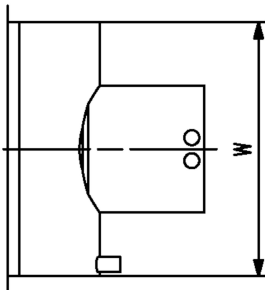
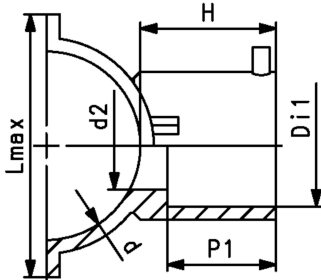


ELGEF Plus Branch saddle PE100
d110-d250mm / SDR11 / Outlet d90-d125 mm

- 10 bar Gas / 16 bar Water
- Branch Saddle complete, incl. lower part and 3 screws
- Additional fixing with snatch hinge
- Electrofusion outlet with integrated pipe fixation
- Protected wire without medium contact
- 4 mm pin connectors
- Limited path fusion indicators
- FM 1613 approved - 15 bar

Note:

* Delivered without lower part. Pipe fixation with multiple use assembly tool no. 193.281.027



	d (mm)	d2 (mm)	Di1 (mm)	DN (mm)	PN (bar)	Code	Weight (kg)
	110	65	90	100	16	193 135 009	1.124
	110	65	110	100	16	193 135 010	1.224
	125	65	90	100	16	193 135 019	1.134
	125	65	110	100	16	193 135 020	1.290
*	140	65	90	125	16	193 135 029	0.982
*	140	65	110	125	16	193 135 030	1.087
	160	65	90	150	16	193 135 039	1.449
	160	86	110	150	16	193 135 040	1.582
	160	86	125	150	16	193 135 041	1.782
	180	65	90	150	16	193 135 049	1.672
	180	86	110	150	16	193 135 050	1.765
	180	86	125	150	16	193 135 051	2.015
	200	65	90	200	16	193 135 059	1.803
	200	86	110	200	16	193 135 060	1.963
	200	86	125	200	16	193 135 061	2.128
	225	65	90	200	16	193 135 069	2.006
	225	86	110	200	16	193 135 070	2.400
	225	86	125	200	16	193 135 071	2.312
	250	65	90	250	16	193 135 079	2.145
	250	86	110	250	16	193 135 080	2.258
	250	86	125	250	16	193 135 081	2.500

	d (mm)	Lmax (mm)	P1 (mm)	W (mm)	H (mm)	Suitable for
	110	164	82	220	101	SDR Pipe 9-11
	110	164	88	220	107	SDR Pipe 9-11
	125	179	82	220	101	SDR Pipe 9-11
	125	179	88	220	107	SDR Pipe 9-11
*	140	195	81	220	101	SDR Pipe 9-11
*	140	195	87	220	107	SDR Pipe 9-11
	160	215	82	240	102	SDR Pipe 9-17.6
	160	215	88	240	108	SDR Pipe 9-17.6
	160	215	99	240	129	SDR Pipe 9-17.6
	180	237	82	260	102	SDR Pipe 9-17.6
	180	237	88	260	108	SDR Pipe 9-17.6
	180	237	99	260	129	SDR Pipe 9-17.6
	200	253	82	260	102	SDR Pipe 9-17.6
	200	253	88	260	108	SDR Pipe 9-17.6
	200	253	99	260	129	SDR Pipe 9-17.6
	225	287	82	260	102	SDR Pipe 9-17.6
	225	287	88	260	108	SDR Pipe 9-17.6
	225	287	99	260	129	SDR Pipe 9-17.6
	250	312	82	260	102	SDR Pipe 9-26
	250	312	88	260	108	SDR Pipe 9-26
	250	312	99	260	129	SDR Pipe 9-26

Data sheet

valid from: 2/11/26



The technical data are not binding. They neither constitute expressly warranted characteristics nor guaranteed properties nor a guaranteed durability. They are subject to modification. Our General Terms of Sale apply.

Georg Fischer Piping Systems Ltd, Postfach, CH-8201 Schaffhausen/Switzerland Phone +41 -(0)52-631 1111 e-mail:
info.ps@georgfischer.com Internet: <http://www.gfps.com>