



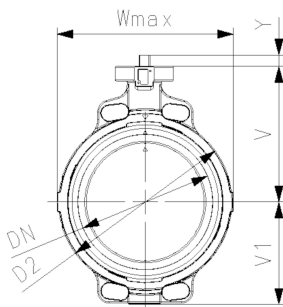
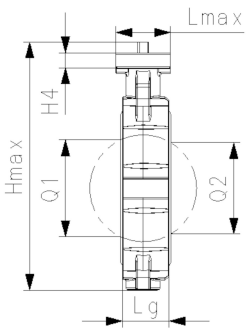
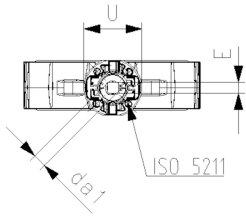
PVC-U无油 手动蝶阀 567型
裸轴
对夹式

型号:

- ≤DN300，总长度符合EN558 (DN50-200 : line25, DN250-300 : line16), ISO5752
- 连接尺寸: ISO7005 PN10, EN1092 PN10, DIN2501 PN10, ANSI/ASME B 16.5 等级 150, BS 1560:1989, BS 4504, JIS B 2220
- 口径DN50-200 : 执行器连接尺寸符合DIN/ISO 5211 F07
- 口径DN250-300 : 执行器连接尺寸符合DIN/ISO 5211 F10

注:

对于某些材料组合 (例如DN300阀门与PE/PP管道), 需要特殊的法兰适配器。请查看 www.gfps.com 上的“完美法兰连接工具”



d (mm)	Size (inch)	DN (mm)	PN (bar)	kv-value ($\Delta p=1$ bar) (l/min)	EPDM code	SP weight (kg)	FKM code	SP weight (kg)
63	2	50	10	740	161 567 842	1, 0,818	161 567 862	1, 0,822
75	2 1/2	65	10	1500	161 567 843	1, 0,921	161 567 863	1, 0,926
90	3	80	10	2400	161 567 844	1, 1,047	161 567 864	1, 1,068
110	4	100	10	3800	161 567 845	1, 1,699	161 567 865	1, 1,703
140	5	125	10	8600	161 567 846	1, 2,266	161 567 866	1, 2,284
160	6	150	10	11400	161 567 847	1, 3,271	161 567 867	1, 3,294
225	8	200	10	19900	161 567 848	1, 4,706	161 567 868	1, 4,734

d (mm)	Hmax (mm)	Lmax (mm)	Wmax (mm)	H4 (mm)	V1 (mm)	Lg (mm)	D2 (mm)	Q1 (mm)	Q2 (mm)	E (mm)	da1 (mm)
63	238,3	84,8	118,4	23	78,8	45	104	40	11	13,5	
75	251,2	84,8	132,5	23	85,1	46	115	54	35	11	13,5
90	263,0	84,8	136,8	23	91,2	49	131	67	50	11	13,5
110	287,5	84,8	161,0	23	105,7	56	161	88	74	14	17,3
140	314,2	84,8	187,0	23	118,8	64	187	113	97	14	17,3
160	338,3	84,8	215,0	23	130,9	72	215	139	123	17	21,1
225	387,2	84,8	267,0	23	158,3	73	267	178	169	17	21,1

The technical data are not binding. They neither constitute expressly warranted characteristics nor guaranteed properties nor a guaranteed durability. They are subject to modification. Our General Terms of Sale apply.

Georg Fischer Piping Systems Ltd, Postfach, CH-8201 Schaffhausen/Switzerland Phone +41 -(0)52-631 1111 e-mail: info.ps@georgfischer.com Internet: <http://www.gfps.com>